

INNOFLOW M stainless steel distributor

Dimension DN25

Datasheet 030910-3XX, Issue 0324

Table of contents

General information	2
Function principle of components	4
Dimensions and components 030910-335 to 348.....	5
Spare parts	6

INNOFLOW M stainless steel distributor

General information

Description of INNOFLOW M - Distributors for floor heating systems

Distributors for floor heating systems are high quality products that are assembled and pressure tested during the manufacturing process under constant quality control.

Advantages of INNOFLOW M - Distributors for floor heating systems are:

- possibility of high pressure, high or low temperature and high flow of medium
- easy to use and maintain
- reliable design and long service life
- easy installation
- possibility from 2 to 15 heating circuits
- air vent and drain valve integrated
- flow meters 6 l/min

Field of application

INNOFLOW M - Distributors are used in floor heating systems, wall heating systems or ceiling heating. When using a version with flow meter the individual heating circuits can be regulated. An adjustment of the flow volume is also possible by the shut-off valves. Distributor input is female threaded G1" so it is possible to connect distributor with threaded pipes or with an adapters.

Assembly instruction

The INNOFLOW M - Distributors for floor heating systems can be mounted using the brackets directly to a wall or in a distributor cabinet. The mounting position is arbitrary. Distributor with flow meter must always be used in the supply flow. The factory setting is fully open and be adjusted by using the supplied adjusting key turned clockwise. The set amount of flow volume can be read directly at the inspection glass.

Maintenance instruction

No mineral oil lubricant may be used for the maintenance of valves. Usage of these materials will damage sealing elements. Silicone-based lubricant are allowed. To avoid sticking of thermostatic valves monthly operating is recommended.

Disposal instruction

The disposal of INNOFLOW M - Distributors for floor heating systems must not endanger the health or the environment. National legal regulations for proper disposal of the INNOFLOW M - Distributors for floor heating systems have to be followed.

Models

030910-335 to 348

Supply flow distributor rod G1" with flowmeter 0 – 6 l/min
Return flow distributor rod G1" with thermostatic valves

Material and construction

Rod distributor:	Stainless steel X5, CrNi 1810
Shut-off valves:	Brass, EN 12164
Thermostatic valves:	Brass, EN 12164
Sealing:	EPDM
Caps:	Plastic PP
Springs:	Stainless steel X7, CrNiAl 17 7
Internal threaded side connection:	G 1" acc. to ISO 228-1
External threaded bottom connection:	G 3/4" acc. to ISO 228-1, cone sealing

Pursuant to Article 33 of the REACH Regulation (EC No. 1907/2006), we are obliged to point out that the material lead is listed on the SVHC list and that all brass components manufactured in our products exceed 0.1% (w / w) lead (CAS: 7439-92-1 / EINECS: 231-100-4). Since lead is a component part of an alloy, actual exposure is not possible and therefore no additional information on safe use is necessary.

Medium

Heating water quality according to ÖNORM H5195 or VDI-Standard 2035. The use of ethylene or propylene glycol in a mixing ratio 25- 50% is allowed. Please refer to manufacturers documentation when using ethylene glycol products for frost and corrosion protection. Please note that EPDM gaskets will be affected by Mineral oils lubricants and thus lead to failure of the EPDM seals in the valves that use EPDM seals. The INNOFLOW M- Distributors for floor heating systems is not suitable for usage of aggressive medium (such as: acids, alkalis, combustible and explosive gases.) because it can destroy sealing components.

The actually permissible operating data depends on the pipes or clamp connections used.

Example: if plastic pipe connections are used the bottom operation data is allowed (if approved by pipe manufacturer).

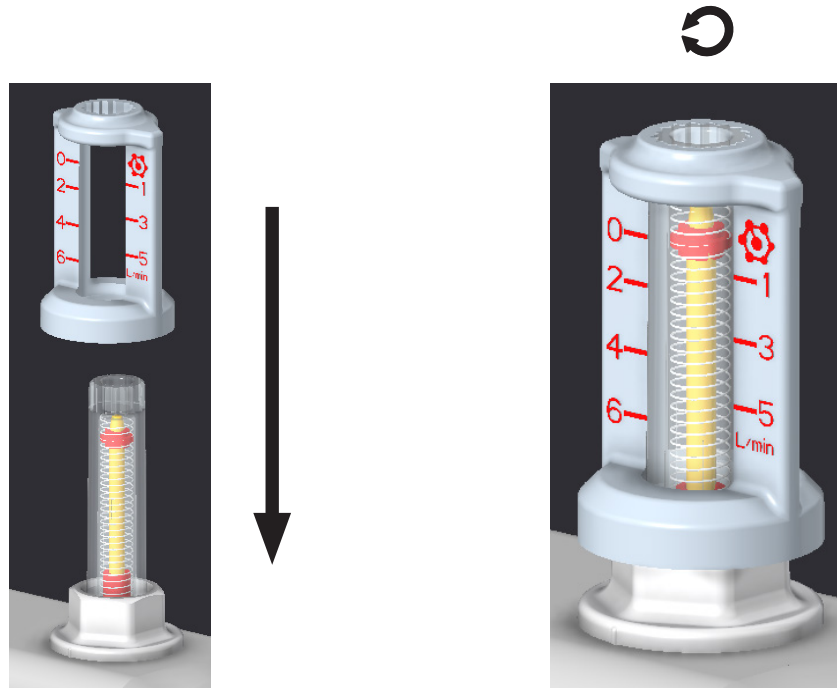
Max. operating temperature	70 °C
Max. operating pressure	6 bar

Higher operating pressure is permitted only after written approval by Black Sea Supplier. When using compression unions for copper and steel pipes, the permissible temperature and pressure ratings according to EN 1254-2:1998.

Function principle of components

- Flowmeter valves

The factory setting is fully open. The set amount of flow volume can be read directly at the inspection glass. To adjust the flow volume use plastic adjustment key on top of the knurl and rotate clockwise or counter-clockwise.

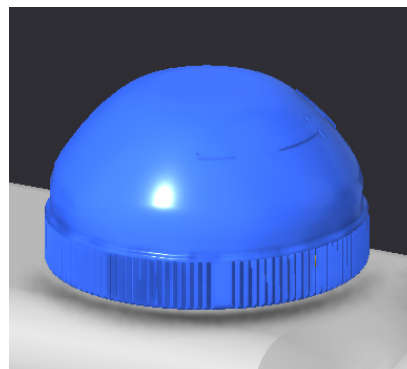


Thermostatic valves M30x1,5

Are opened by spring force and can be closed with protective cap, manual drive or thermal actuator. Protective caps are mounted on the thermostatic valves as mechanical protection during construction. These are to be replaced after commissioning by suitable electrical or mechanical drives. The thermal drives can be operated by means of room temperature control or radio control. Room temperature control or wireless control are described in separate data sheets.

⌚ Open

⌚ Close

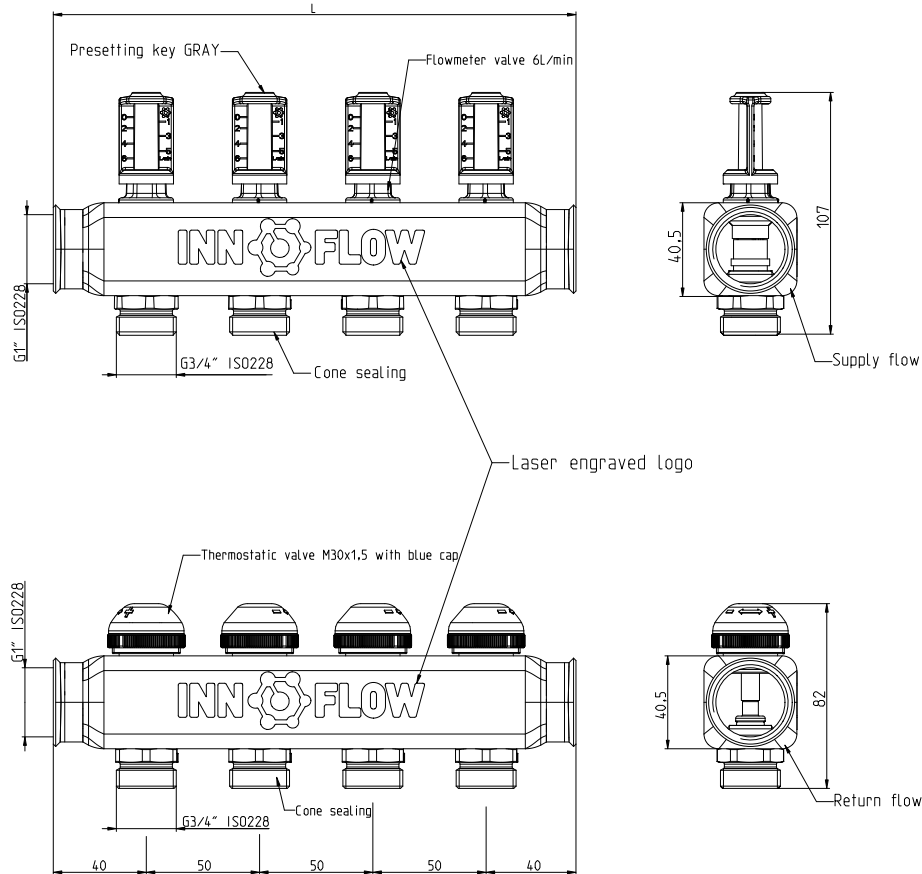


Note: Thermostatic valves and flowmeters are not shut-off devices. Unfilled heating circuits must be closed with a cap at the outlet.

INNOFLOW M stainless steel distributor

Flow meter 6 L/min / thermostatic valves

Dimensions and components

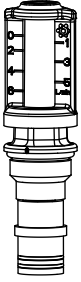
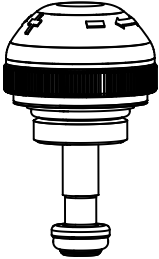


Order Nr.	Outlets	L [mm]
030910-335	2	130
030910-336	3	180
030910-337*	4	230
030910-338	5	330
030910-339	6	380
030910-340	7	430
030910-341	8	480
030910-342	9	530
030910-343	10	530
030910-344	11	580
030910-345	12	630
030910-346	13	680
030910-347	14	730
030910-348	15	760

*030910-337 is shown on the drawing above.

Please note: All specifications and information within this document are reflecting the information available at the time of going to print and meant for informational purpose only. Black Sea Suppliers reserves the right to modify and change products as well as its technical specifications and/or its function according to technological progress and requirements. All diagrams are indicative in nature and do not to be complete. It is understood that all images of products are symbolic representations and therefore may visually differ from the actual product. Colors may differ due to printing technology used. In case of any further questions don't hesitate to contact your closest Black Sea Suppliers - Office.

 Spare parts

Illustration	Description	Item number
	<p>FlowMeter 6L/min with grey scale BSS</p>	<p>1863103-196BR</p>
	<p>TS insert with blue plastic cap BSS</p>	<p>1640331-181BR</p>