

Ref. : DI7140N

Rev. : D

Date : 25/01/2018

Page : 1/1

RUBBER EXPANSION JOINT BSPT FEMALE THREADED

DI 7140N



APPLICATION

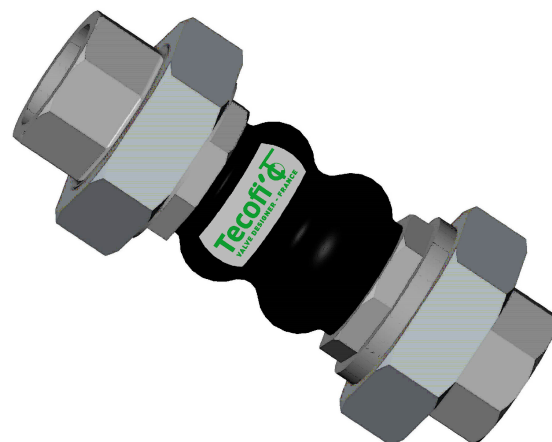
Hot water, cold water, water treatment, sewerage, heating, air conditioning, control of vibrations and noise on pipes etc.

GENERAL CHARACTERISTICS

EPDM rubber bellow
Female cast iron 3 pieces BSPT threaded union ends.
Movement:
- Axial compression,
- Axial elongation,
- Lateral movement.

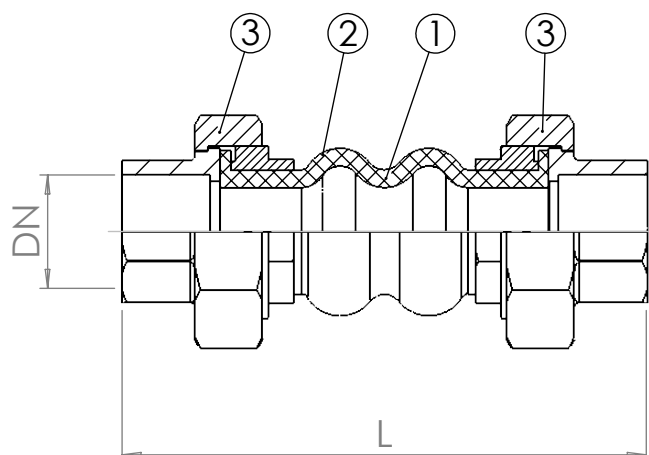
CONSTRUCTION

3	2	Union	Malleable iron
2	1	Reinforcement	Nylon tyre cord
1	1	Bellow	EPDM rubber
Pos.	Qty.	Description	Material

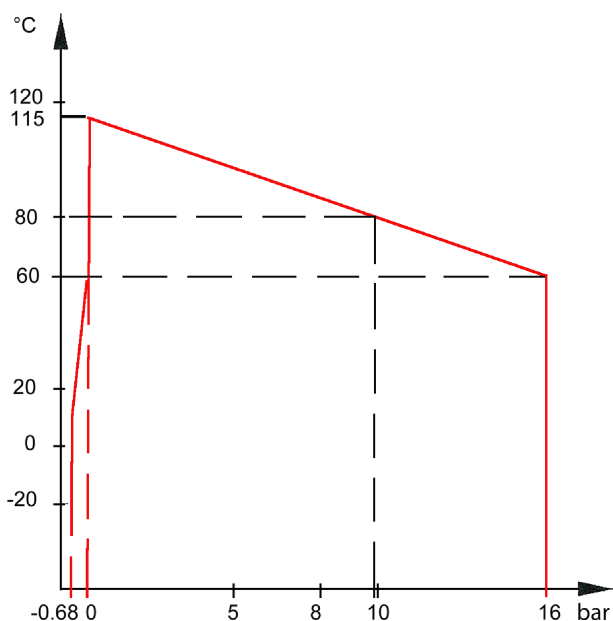


DIMENSIONS

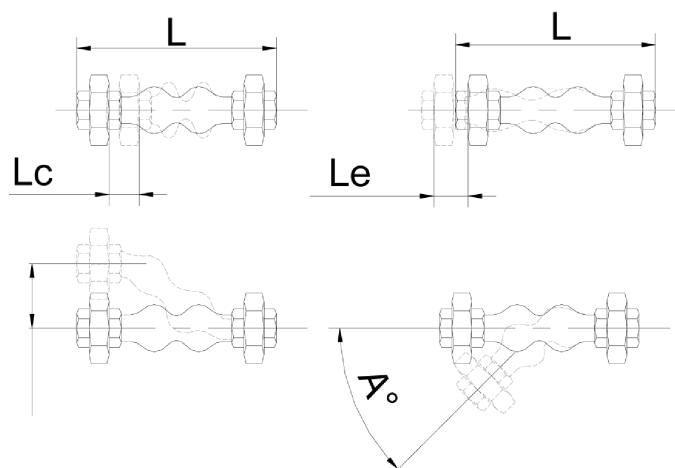
DN		L	Lc	Le	LI	A°	Weights (kg)
mm	inch						
15	1/2"	200	22	6	22	20°	0.70
20	3/4"	200	22	6	22	20°	0.75
25	1"	200	22	6	22	20°	1.22
32	1 1/4"	200	22	6	22	20°	1.51
40	1 1/2"	200	22	6	22	20°	2.03
50	2"	220	22	6	22	20°	2.62



WORKING CONDITIONS



Lc : Axial compression.
Le : Axial extension.
LI : Lateral movement.



STANDARDS

BSPT female threaded according to standard ISO 228-1.

TECOFI France - 83, Rue Marcel Mérieux 69960 Corbas - FRANCE
Tél. +33 (0) 4 72 79 05 79 - Fax +33 (0) 4 78 90 19 19 / +33 (0) 4 72 79 05 70
Adresses e-mail : sales@tecofi.fr ; tecofi@tecofi.fr / Site web : www.tecofi.fr